

ZigBee AM43 Blind Drive Motor

Manual Instruction



1.Features

- 1 Motor can set upper & bottom limit positions and limits can be saved even when motor power off;
- 2 Two running modes: tilt & lift mode. Default mode is tilt;
- 3 Smart phone APP control;
- 4 Zigbee Bi-direction technology, instant shades status can be showed on APP;
- 5 Motor speed is adjustable on the APP;
- 6 Large battery capacity supports long time working;
- 7 Powered by charger or solar panel, the solar panel with built in light sensor for auto-control;

2.Motor Specifications

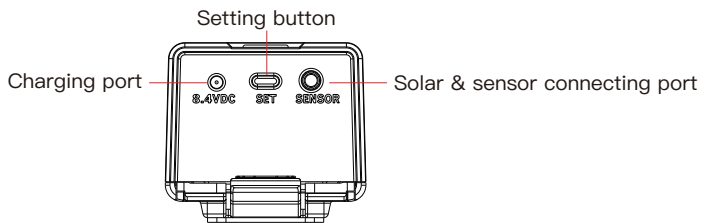
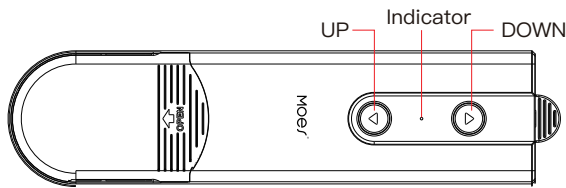
Model	AM43-0.45/40-ES-EZ(TY)
Input Power	DC charger 8.4VDC
Solar panel specs	12V/0.3W
Lock-rotor current	1.8A
Speed Range	20-50rpm
Torque	0.45Nm
Rated Current	1A
Battery Capacity	7.4VDC/1000mAh

- Bitte scannen Sie den QR-Code, um das deutsche Handbuch, das Installationsvideo und die Funktionseinführung zu erhalten
- Escanee el código QR para obtener el manual en español, el video de instalación y la introducción de la función
- Veuillez scanner le code QR pour obtenir le manuel en français, la vidéo d'installation et l'introduction des fonctions
- Отсканируйте QR-код, чтобы получить руководство на русском языке, видео по установке и описание функций
- Leia o código QR para obter o manual em português, o vídeo de instalação e a introdução das funções



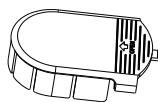
请扫描二维码获取中文说明书、
安装视频及功能介绍

3.Motor Illustration

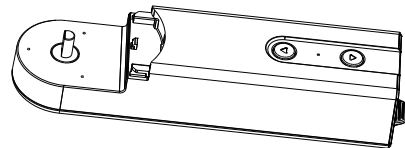


4.Installation

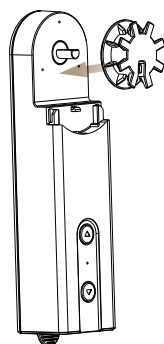
- 1 Do not exposure it under strong direct sunshine. Keep the blind engine far away from high temperature or wet place for using or storing.



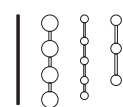
Remove the cover plate of driving gear



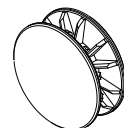
- 2 Choose compatible driving gear



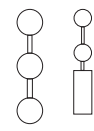
Thin cord strings and small bead chains



Thick cord strings

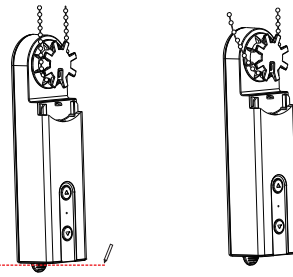


Large bead chains



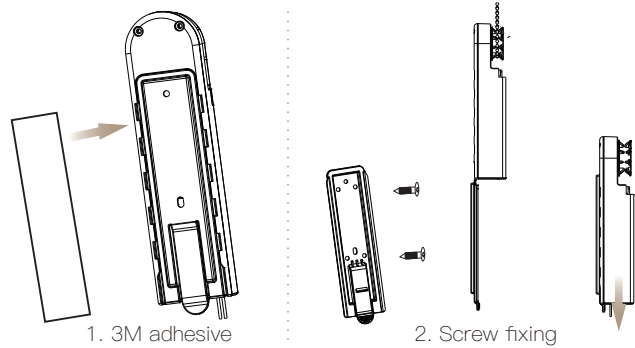
3 Tighten the cords or chains to driving gear.

Please leave 3-5mm space between the bottom position and support bracket during installation.



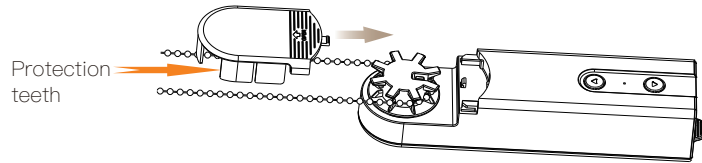
③

4 Blind engine fixing plate installation options



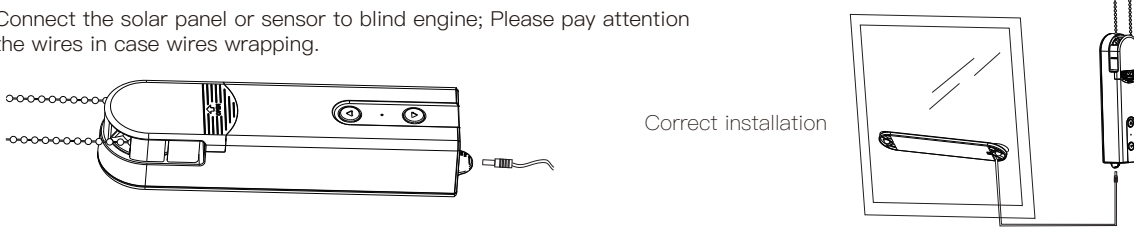
④

5 Remove the teeth where from the cord or chains come out on cover plate; then lock the cover up



⑤

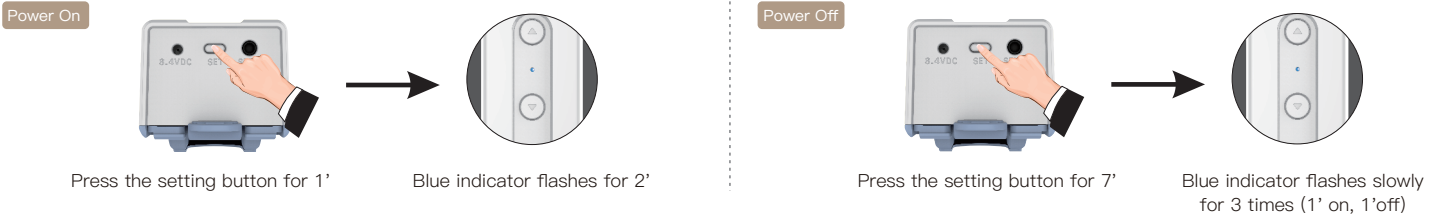
6 Connect the solar panel or sensor to blind engine; Please pay attention the wires in case wires wrapping.



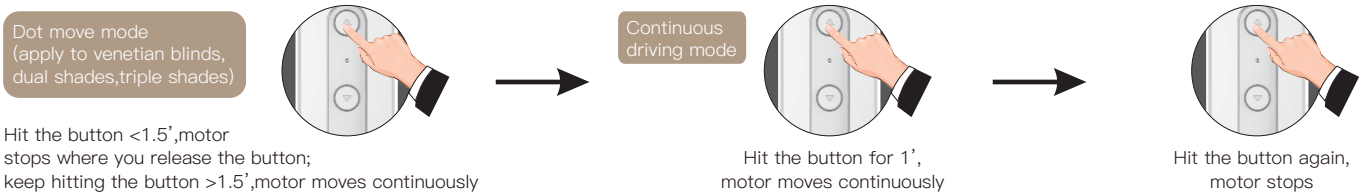
⑥

5. Setting instruction

①. Power On/Off

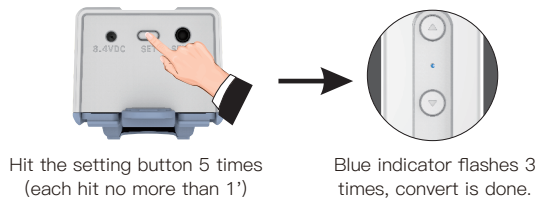


②. Button control

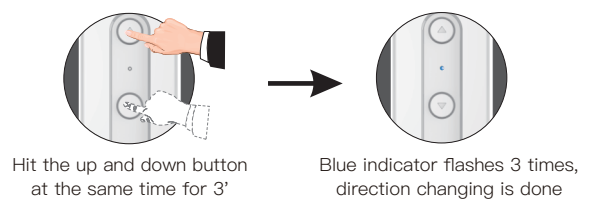


③. Tilt/lift functions convert

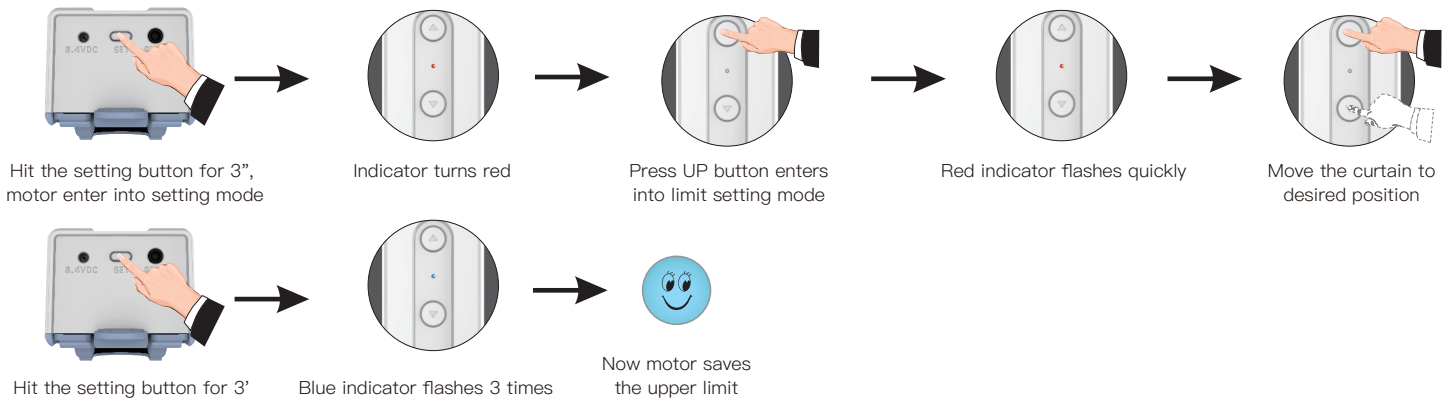
*Remark: default mode is tilt mode



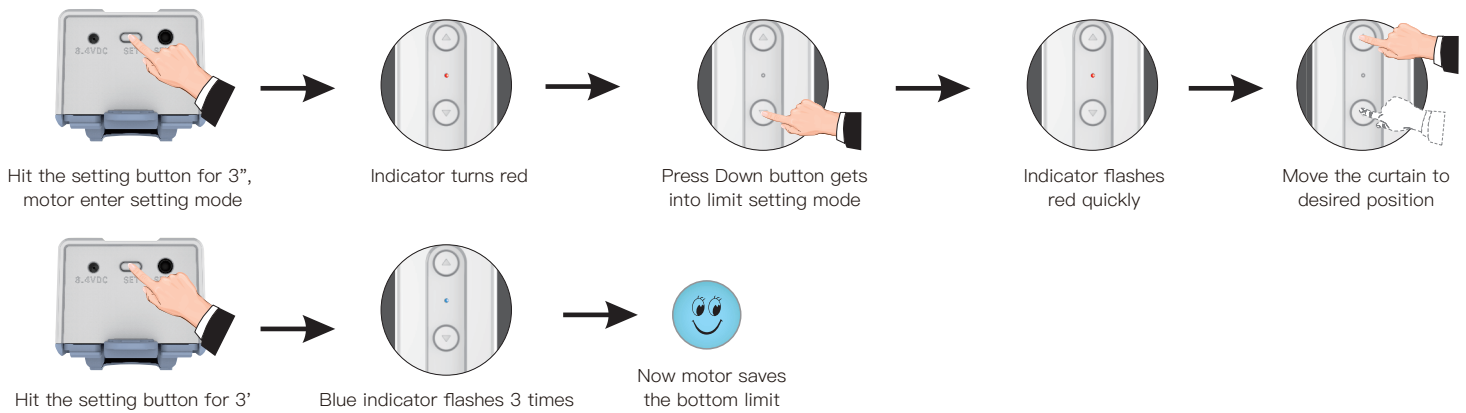
④. Change direction



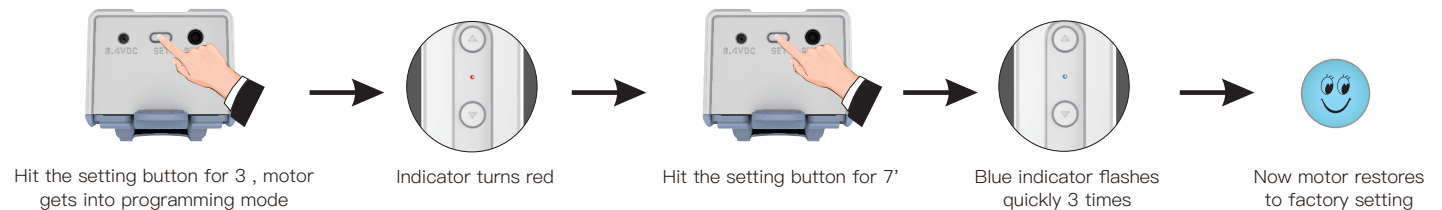
⑤.Upper limit setting (Motor will quit setting mode automatically after 30" if the motor receives any order)



⑥.Bottom limit setting (Motor will automatically exit setting mode after 30" if the motor without receiving any order)



⑦.Restore factory setting (Motor will automatically exit programming mode after 30" if motor without receiving any order Motor restore to factory setting will delete all the setting you done before)



6.Preparation for use

1. APP Download MOES APP



MOES APP is upgraded as much more compatibility than Tuya Smart/Smart Life APP, functional well for scene controlled by Siri,widget and scene recommendations as the fully new customized service.(Note:Tuya Smart/Smart Life APP still works,but MOES APP is highly recommended)



*Please scan the QR code or download MOES on App store.

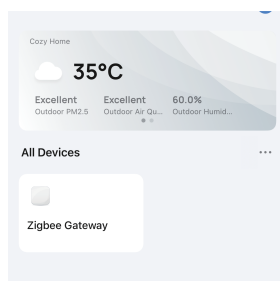
2. Register or Log in



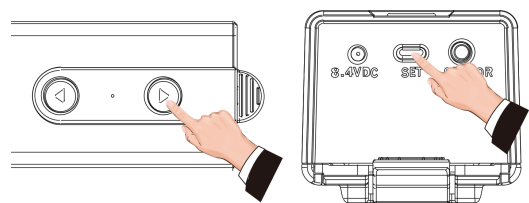
Enter the Register/Login interface; tap "Register" to create an account by entering your phone number to get verification code and "Set password". Choose "Log in" if you already have a MOES account.

7. Add Device

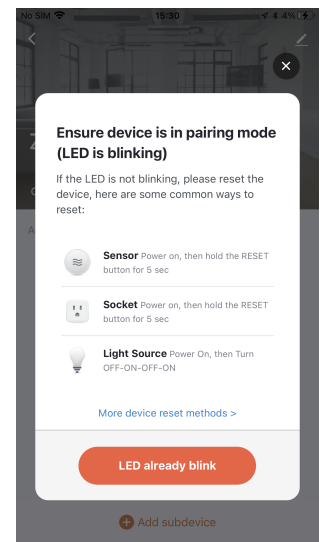
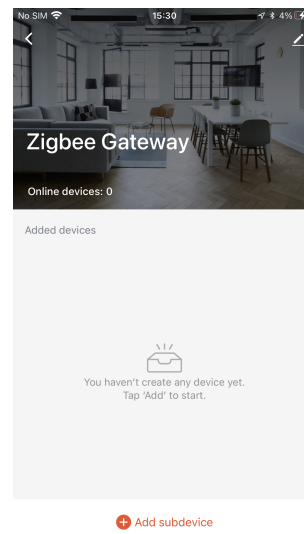
1.Make sure your Smart MOES Smart APP has successfully connected to a Zigbee gateway.



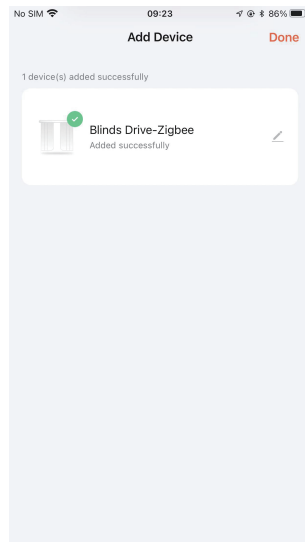
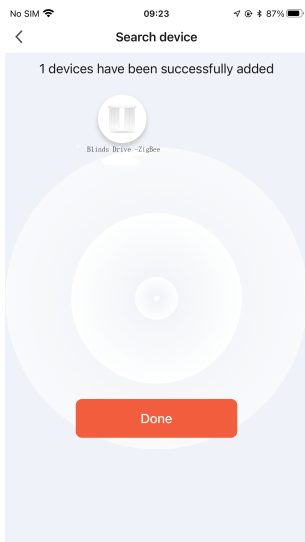
2.Click both "setting" and "Down" bottom 3" at the same time, the blue light flashes 3 times quickly, the operation done.



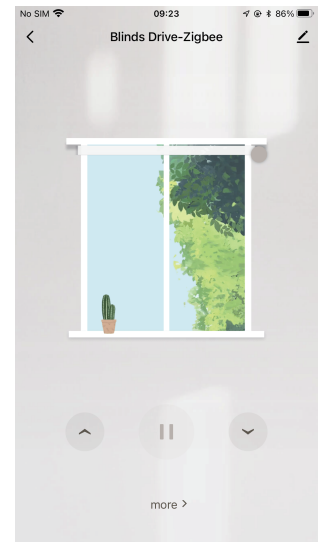
3. Open MOES App, enter the gateway.
Please follow the picture below to finish as "Add subdevice" → LED already blink, and the connecting will take about 10–120 seconds to complete depending on your network condition.



4. Add the device successfully, you can edit the name of the device to enter the device page by click "Done".



5. Click "Done" to enter the device page to enjoy your smart life with home automation.



8. Troubles shooting

No.	Troubles	Troubles Reason	Elimination Method
1	Motor doesn't work or run slowly	A. overloaded B. improperly installation make motor stuck	A. choose proper motor B. check motor installation
2	Motor suddenly stop working	A. power off B. motor enter overloaded protection	A. charge the motor B. check whether motor is overloaded or stuck
3	Motor doesn't work when you charge motor	Put the charger on sensor connection port	Connect to charger port

Tips: please check carefully and don't make mistake on the 8.4VDC charger port and sensor connection port

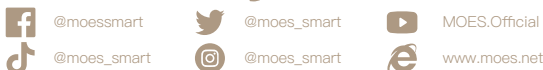
Subscribe here

Thank you for your support and purchase at we Moes, we are always here for your complete satisfaction, just feel free to share your great shopping experience with us.



If you have any other need, please do not hesitate to contact us first, we will try to meet your demand.

FOLLOW US



UK REP

EVATOST CONSULTING LTD
Address: Suite 11, First Floor, Moy Road Business Centre, Taffs Well, Cardiff, Wales, CF15 7QR
Tel: +44-292-1680945
Email: contact@evatmaster.com

EC REP

AMZLAB GmbH
Laubenhof 23, 45326 Essen
Made In China



Manufacturer:
WENZHOU NOVA NEW ENERGY CO.,LTD
Address: Power Science and Technology Innovation Center, NO.238, Wei 11 Road, Yueqing Economic Development Zone, Yueqing, Zhejiang, China
Tel: +86-577-57186815
After-sale Service: service@moeshouse.com